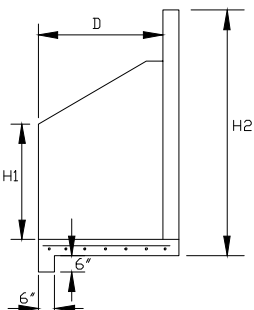
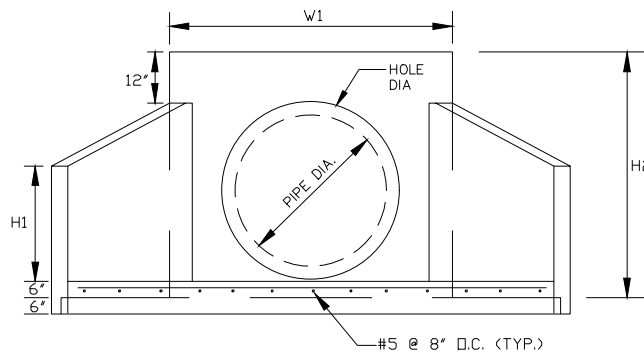


PLAN VIEW



SIDE VIEW



ELEVATION VIEW

PRECAST CONCRETE ENDWALL DIMENSIONS

PIPE DIAMETER	HOLE DIAMETER	MINIMUM BAR SIZE	H1 (FT)	H2 (FT)	D (FT)	W1 (FT.)	W2 (FT.)	EST. WEIGHT	NCDOT IDENTIFIER NO.
15" & 18"	26"	#5 @ 8"	1.75	3.75	1.85	3.75	6.75	2450 #	PC-HW12/15/18-082207
24"	34"	#5 @ 8"	2.00	4.25	2.10	4.25	7.75	3120 #	PC-HW24-082207
30"	42"	#5 @ 8"	3.00	6.00	2.79	5.50	11.50	6340 #	PC-HW30/36-082207
36"	48"	#5 @ 8"	3.00	6.00	2.79	5.50	11.50	6340 #	PC-HW30/36-082207
42"	55"	#5 @ 8"	3.50	6.75	3.50	6.75	13.00	8120 #	PC-HW42/48-082207
48"	60"	#5 @ 8"	3.50	6.75	3.50	6.75	13.00	8120 #	PC-HW42/48-082207

NOTES:

- 1) USE 4000 PSI CONCRETE @ 28 DAYS.
- 2) REINFORCING STEEL (BARS) MEETS OR EXCEEDS ALL REQUIREMENTS OF ASTM A615, GRADE 60 AND/OR ASTM A706 WITH MIN 2" CLEARANCE.
- 3) PLACE LIFT HOLES OR PINS IN ACCORDANCE WITH OSHA STANDARD 1926.704.
- 4) PIPE TO BE GROUTED INTO HEADWALL AT THE JOB SITE BY CONTRACTOR.
- 5) PRECAST ENDWALLS ARE IN ACCORDANCE WITH NCDOT 838.80 AND ASTM C913, AS APPLICABLE.
- 6) WELDED WIRE FABRIC MAY BE SUBSTITUTED FOR REBAR AS LONG AS THE SAME AREA OF STEEL IS PROVIDED AND THE WIRE MEETS ALL REQUIREMENTS OF ASTM A185.
- 7) CHAMFER ALL CORNERS 1" OR HAVE A RADIUS OF 1".
- 8) THE MINIMUM BAR SIZE SHALL BE #5 BARS AT 8" CTS. THE PRODUCER HAS THE OPTION TO INCREASE THIS BAR SIZE AS NEEDED.

REVISIONS	DATE	BY
ADDED NCDOT IDENTIFIER NO.S	12-17-2007	RHW
REVISED NOTES 2,6 AND 8	12-19-2007	RHW



WRIGHT & ASSOCIATES
ENGINEERS & SURVEYORS
209 1ST AVE., SOUTH
CONOVER, NC 28613
(828) 465-2205 OFFICE



NOT TO SCALE

FOR SINGLE 15" THRU 48" PIPE-90° SKEW

DATE: JUNE, 2007
JOB NO.: 702-004
DRAWING NO.:
SHEET 1 OF 1